



GIVE YOUR ROOF THE  
**Leading Edge**

Metal Edge and Drainage Components



# Exceptional Details for Exceptional Roofs.

Even the best roof will only perform as well as its edge details, drainage system and other metal components. In fact, nearly three-quarters of all leaks originate not on the roof itself, but in these critical details.

Our high-quality metal products are designed to offer you unsurpassed protection, durability and environmental efficiency. Visit [exceptionalmetals.com](https://exceptionalmetals.com) for a complete listing of products that are ANSI/SPRI ES-1/GT-1 compliant and FM approved.



## Details Make the Difference

The right details can make a huge difference in how a roof looks – and how it performs. EXCEPTIONAL® Metals designs and manufactures high-quality metal edge details, drainage systems, scuppers, collector boxes, pitch pans and other custom-fabricated products. Many of these products will work with most single-ply roofing systems.

# Details Matter

Our full line of products offer a variety of options – so you can finish and compliment every roof design while effectively channeling water off the rooftop.

1



Parapet Wall Vent

2



Arched Coping

3



Snap Coping

4



2-Piece Compression

5



DX-Style Gutter System

6



Metal Flange Scupper

7



Vinyl-Back Collector Box with Downspout & Assembly

8



2-Piece Flex Compression

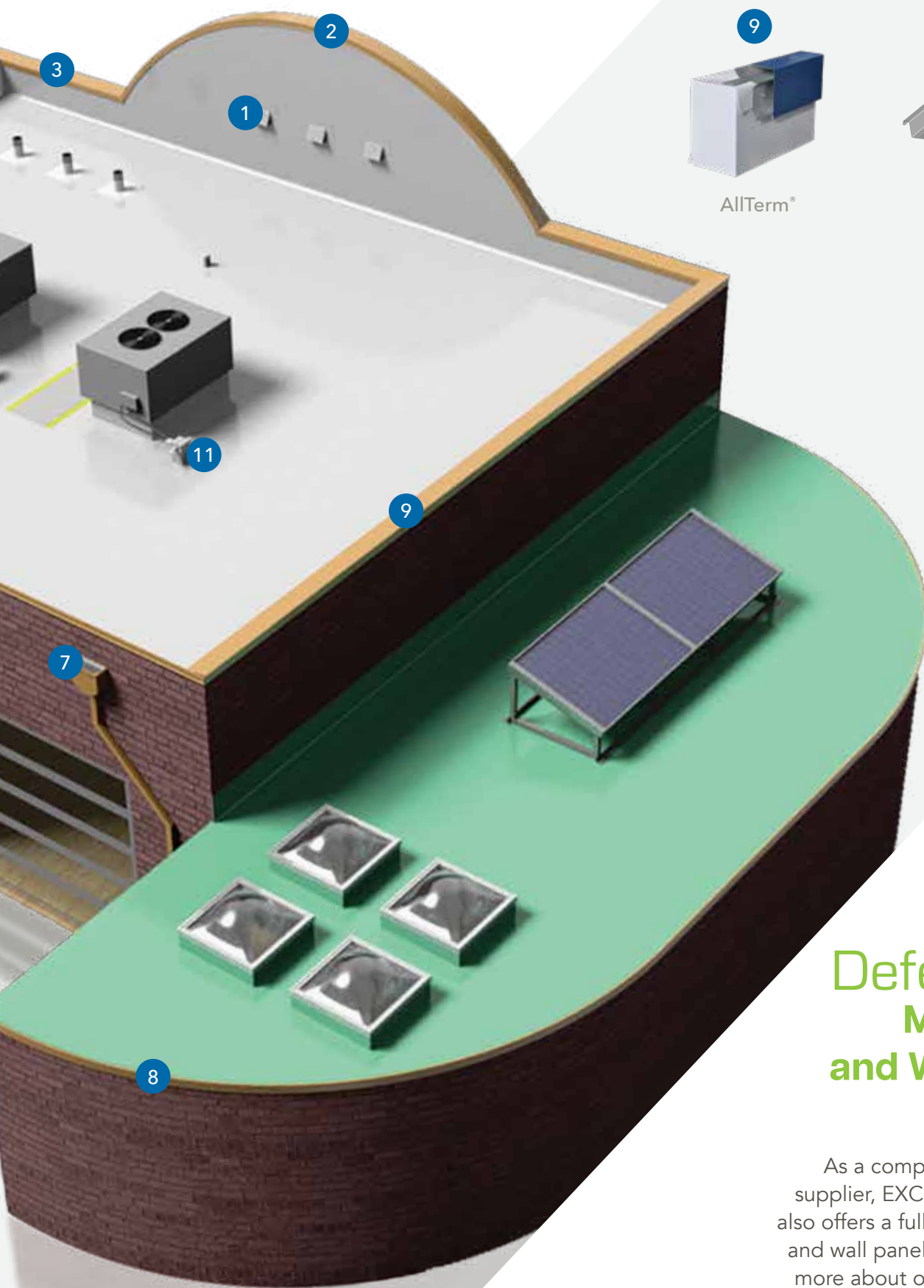
10

5

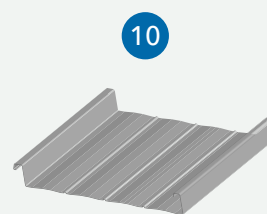
4

6





AllTerm®



Standing Seam



ATR Hub

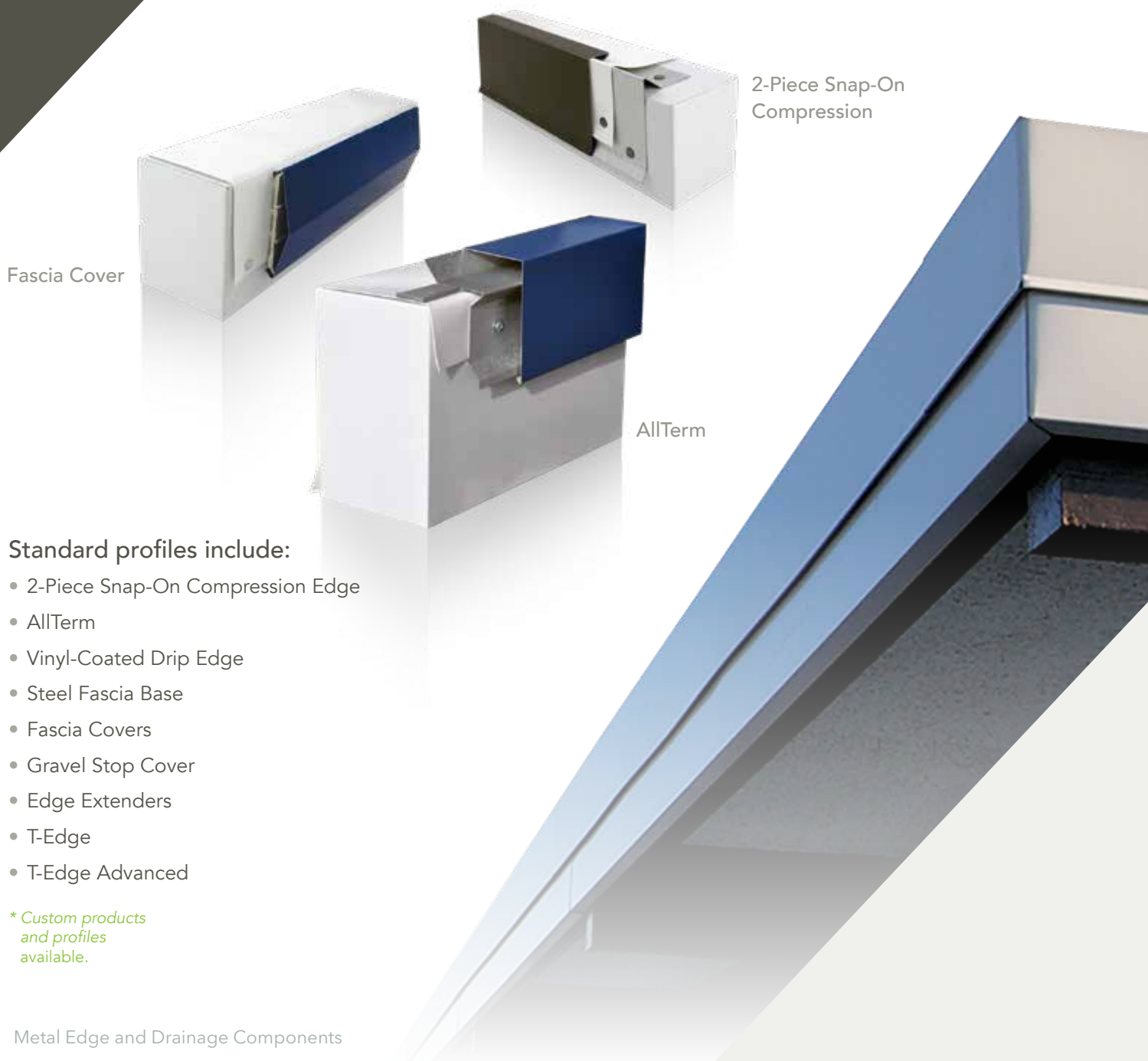
## DefendEX™ Metal Roof and Wall Panel Systems

As a complete metal roofing supplier, EXCEPTIONAL Metals also offers a full line of metal roof and wall panel systems. To learn more about our comprehensive catalog of solutions, contact us at 866.337.4599 or at [exceptionalmetals.com](http://exceptionalmetals.com).

# Edge Details

EdgeEX™

High-quality metal edge details from EXCEPTIONAL Metals create durable, reliable terminations and transitions to single-ply membrane roofing systems. They are available in a variety of stock gauges and finishes, which can often be shipped same day, as well as in custom finishes and designs.



Fascia Cover

2-Piece Snap-On  
Compression

AllTerm

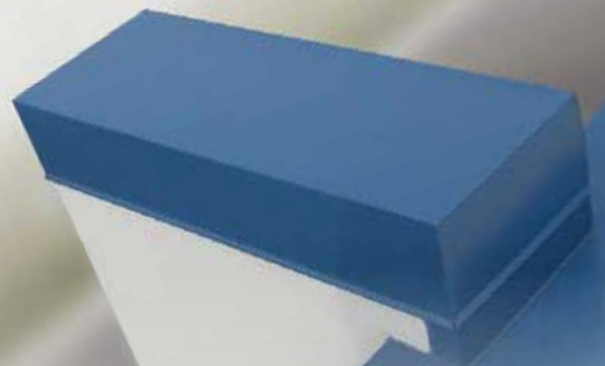
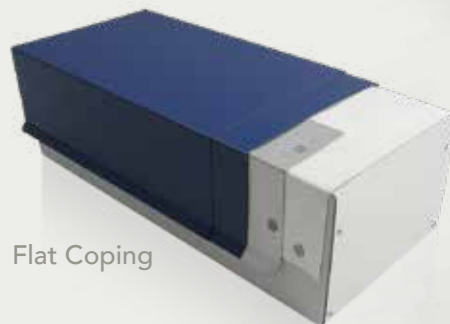
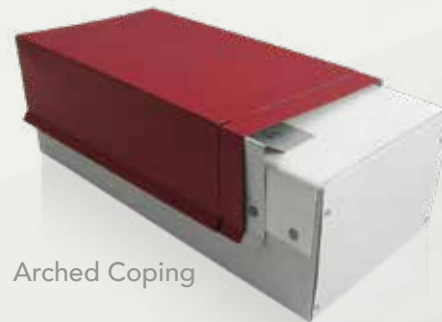
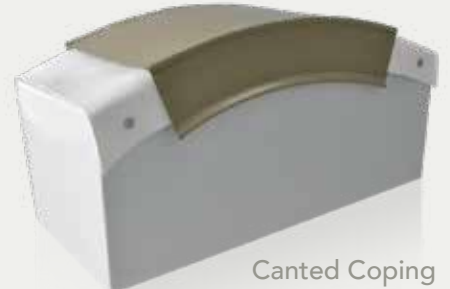
## Standard profiles include:

- 2-Piece Snap-On Compression Edge
- AllTerm
- Vinyl-Coated Drip Edge
- Steel Fascia Base
- Fascia Covers
- Gravel Stop Cover
- Edge Extenders
- T-Edge
- T-Edge Advanced

*\* Custom products  
and profiles  
available.*

# Coping

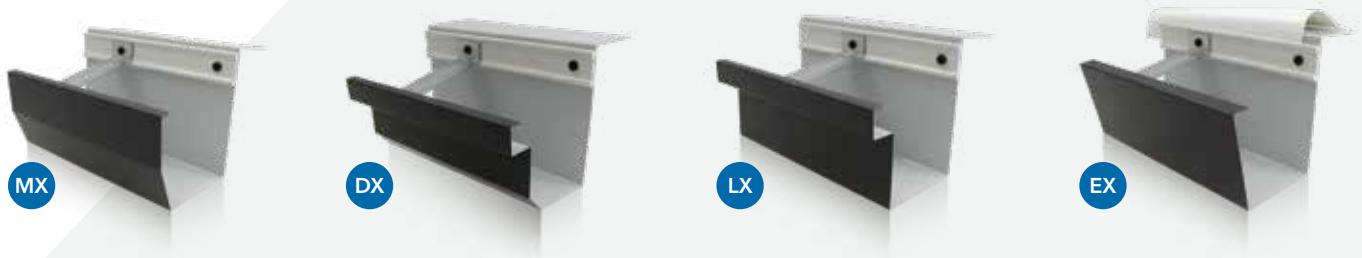
Our various coping systems provide a complete finish and enhance drainage from any parapet wall, including flat, canted, snap and arched copings. If your project requires custom copings, EXCEPTIONAL Metals specializes in manufacturing products that meet your unique specifications.



# Gutters & Downspouts

## GuardEX™

GuardEX™ Gutters by EXCEPTIONAL Metals are ANSI/SPRI GT-1 tested and come in four box-style profiles, ensuring long-lasting performance designed to accommodate virtually any drainage need.



We also produce custom sizes and profiles to meet the needs of your design and all are available with suitable end caps and miters.

Downspouts are available in a variety of sizes with a traditional closed face or an open face, which prevents blockages from ice and debris.





# Conductors, Collectors and Scuppers

Our products include:

- Scuppers
- Metal Flange Scuppers
- Conductors
- Vinyl-Back Collector Boxes



Scupper



Metal Flange Scupper



Conductor



Vinyl-Back Collector Box

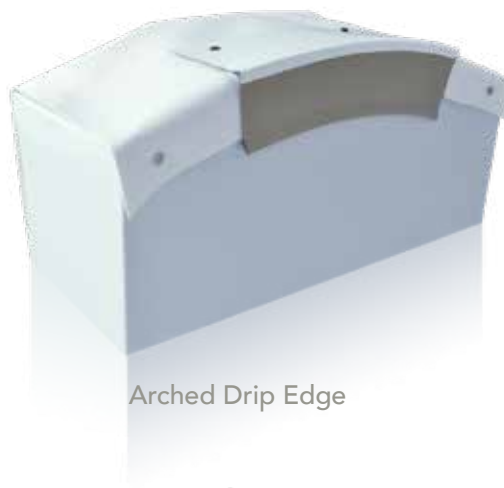
Conductor boxes, collectors and scuppers are precisely crafted to exact specifications, offering you through-wall drainage in a package that enhances the aesthetics of your design.

# Custom-Fabricated Solutions

You have an idea. We can bring it to life. EXCEPTIONAL Metals has the custom design and fabrication capabilities to create nearly any edge metal, drainage or trim design concept – and make sure it works perfectly with your roofing system.



Conductor



Arched Drip Edge

Some of our custom-fabrications have included:

- Cornice Flashing
- Arched Drip Edge
- Wall and Ridge Vents
- Hubs and Pitch Pans

## What's your idea?

Contact us at 866.337.4599 or [exceptionalmetals.com](http://exceptionalmetals.com) to discuss your custom needs.



# The Color of Quality



EXCEPTIONAL Metals offers a range of standard colors.

Available in a wide variety of colors, EXCEPTIONAL Metals' products utilize metals with Kynar 500® coatings, featuring Hylar 5000® resin which provides excellent color retention and quality. This creates a surface that's exceptionally resistant to installation scratching, marring and transit abrasion, and has the flexibility to handle the most demanding post-forming operations. Additionally, EXCEPTIONAL Metals' coated metal products can be formulated with Cool UV reflective pigmentation to meet high- and low-slope Cool Roof Rating Council (CRRC) specifications.

We also offer a mill-finished GALVALUME® with a two-sided, clear chromate/acrylic finish. It eliminates handprints and stains from handling and storage. The acrylic finish dissolves over time, allowing for natural and even weathering.



## Environmental Performance

A key component of EXCEPTIONAL Metals' products is steel, the most recycled material on the planet. Because recycling decreases the amount of energy required to produce metal products, recycled content is also being recognized and rewarded by federal and local governments, making use of recycled building materials an economic as well as an environmental benefit.

Additionally, our highly reflective metal roof finishes can help reduce air conditioning load, reducing energy consumption for both commercial and residential building owners.





# Full System Solutions

## DefendEX™

### Metal Roof & Wall Panels

EXCEPTIONAL Metals offers a variety of metal roof and wall panels which blend the aesthetics of an architectural panel with the strength of a structural panel. Featuring a wide selection of colors and profiles, concealed or exposed fastening options and multiple UL uplift ratings, our roof and wall panel systems offer versatility to solve even the most complex design challenges.

Also available from EXCEPTIONAL Metals, insulated metal roof and wall panels combine the aesthetic appeal of structural metal design and the energy efficiency provided by high R-value foam insulation. Ideal for a variety of commercial and residential projects, they offer energy savings and protection against the elements in all climate regions.

## BarrierEX™

### Underlayment

EXCEPTIONAL HT (high temperature) is a self-adhesive roof underlayment and eave protection membrane composed of SBS-modified bitumen. This product is designed to provide a durable, walkable, temporary surface which protects decking for up to 90 days until an EXCEPTIONAL Metals roofing system can be installed.

### Snow Retention

Metal roof snow guard retention systems from EXCEPTIONAL Metals can provide an aesthetically pleasing solution for rooftop snow buildup on sloped metal roofing installations. Designed to reduce the danger and potential for damage associated with rooftop snow, snow guard systems either melt the snow or break it down to help distribute the weight more evenly on the rooftop.



For more information give us a call or visit our website today.

**866.337.4599**

[exceptionalmetals.com](http://exceptionalmetals.com)



Saginaw, Mich. • Grants Pass, Ore. • Jackson, Miss. • Sigourney, Iowa • Carrollton, Texas • Ludlow, Mass. • Largo, Fla.

EXCEPTIONAL Metals is a brand owned by Holcim Solutions and Products US, LLC.

"EXCEPTIONAL" and "AllTerm" are registered trademarks owned by Holcim Solutions and Products US, LLC.

"DefendEX", "EdgeEX", "GuardEX" and "BarrierEX" are trademarks of Holcim Solutions and Products US, LLC.

"Kynar 500" is a registered trademark owned by Arkema Inc.

"Hylar 5000" is a registered trademark owned by Solvay S.A.

"GALVALUME" is a registered trademark owned by BEIC International Inc.

Metal Edge Booklet ORIG 3.15 REV 7.2.24 - EM090004